

# **Lantern House**

## **Holiday Cottage in the Cotswolds, England UK**

Lantern House, 3 High St, Sherston, Wiltshire, SN16 0LH

tel +44 (0)1666 505807 mob +44 (0)7928 809624 email [lanternhouse@cotswolds.plus.com](mailto:lanternhouse@cotswolds.plus.com)



**Flexible all year round weekly breaks and short break rental bookings are possible outside main holiday periods. You will find a complimentary pint of fresh milk, and an initial supply of tea bags and coffee pods (Nespresso machine) for making a refreshing drink on arrival. For weekly breaks you can also savour delicious Duchy Originals organic biscuits.**



*Lantern House is a charming spacious period cottage equipped to a very high standard and offers couples and families alike extremely comfortable home from home accommodation for up to 5 adults/children & 2 infants/ babies.*

*It has 4 bedrooms (double, twin, single and fully equipped nursery bedroom) with quality mattresses and white cotton bed linen. Original beams throughout and an inglenook fireplace with wood burner in the comfy lounge. There is a private and secure courtyard garden where you can eat al fresco in the warmer weather.*

The cottage is well equipped for 'small ones' including: Cot, Travel Cot, Bob the Builder Blow-up Bed with Sleeping Bag, Nursery Room Blackout Blinds, Nursery Room Temperature Gauge, Baby Listening Monitor, Baby Changing Unit with Mat & Bowl, Baby Bath, Feeding and Soothing Rocking Chair, Toys and Books, Videos and DVDs, Potty, Infant Toilet Seat and Step, Stair Gates on 1st & 2nd Floor Landings, 2 Stokke High Chairs for baby/ toddlers, Baby Food Warmer, Baby Bottle Steamer, Baby/ Infant Crockery & Cutlery.



The cottage is situated right in the heart of the historic village of Sherston 896 AD. The village Post Office/ grocery shop (stocks delicious local produce) is only a short stroll down the high street. A large children's playground (including obstacle course) and recreation field is within 100 yards and in view from upstairs of the cottage. Also within easy walking distance are a wine shop and two excellent pubs should you wish to dine out. You can also take some lovely walks around the village and surrounding beautiful country side - a copy of the Sherston Walks and Village Guide is in the cottage.

### **Great base**

Sherston's location means it is ideally situated for exploring both the Cotswolds & Wiltshire:

- ✓ The village of Bibury with its picturesque Arlington Row of cottages built in the 14<sup>th</sup> Century!
- ✓ Lacock is a beautiful National Trust village where Harry Potter has been filmed
- ✓ Castle Coombe is another beautiful village where War Horse has been filmed
- ✓ Westonbirt Arboretum has one of the world's most spectacular tree collections
- ✓ The market town Tetbury has Prince Charles's much visited Highgrove shop, & other great shops
- ✓ Malmesbury is a beautiful hill top town, dominated by its Abbey
- ✓ Bath, England's finest Georgian town with its unique Thermal Spa is only 40 minutes away by car
- ✓ A much visited family attraction is Countryfile presenter Adam Henson's Cotswold Farm Park
- ✓ Not much further South is the UK's iconic Stonehenge and ancient settlements
- ✓ There's also the famous Longleat Safari and Adventure Park

# **Lantern House**

## **Holiday Cottage in the Cotswolds, England UK**

Lantern House, 3 High St, Sherston, Wiltshire, SN16 0LH

tel +44 (0)1666 505807 mob +44 (0)7928 809624 email [lanternhouse@cotswolds.plus.com](mailto:lanternhouse@cotswolds.plus.com)



### **Accommodation**

*(for the benefit of all guests no smoking inside and no pets are allowed)*

The accommodation is arranged over three floors with central heating throughout – a detailed access statement can be provided on request to consider suitability for guests with mobility, visual or hearing impairments. On the ground floor the front entrance porch opens into a spacious lounge dining room, which leads into the kitchen and utility room.

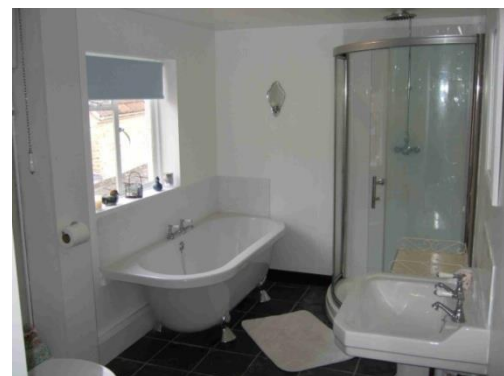
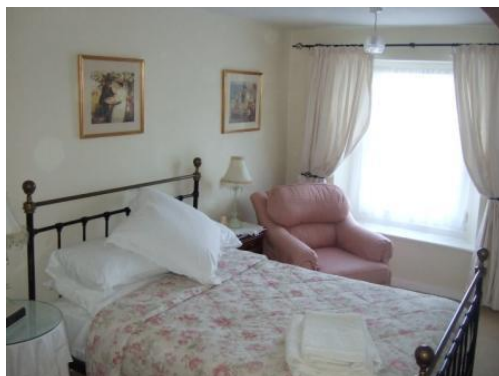


*The kitchen and utility room includes:*

- ✓ double oven electric cooker
- ✓ butler sink
- ✓ dishwasher
- ✓ microwave
- ✓ Nespresso Machine
- ✓ washing machine
- ✓ tumble dryer
- ✓ CD/ radio
- ✓ baby bottle steamer and warmer
- ✓ 2 baby high chairs



*Stairs lead from the lounge to the first floor landing off which the master bedroom, bathroom and fully equipped nursery cot room (with black out blinds) are located.*



*Stairs lead from the first to second floor landing off which are the twin and single bedrooms*

## **Lantern House**

### **Holiday Cottage in the Cotswolds, England UK**

Lantern House, 3 High St, Sherston, Wiltshire, SN16 0LH

tel +44 (0)1666 505807 mob +44 (0)7928 809624 email [lanternhouse@cotswolds.plus.com](mailto:lanternhouse@cotswolds.plus.com)



### **Sample testimonials from our guests**

*""Once again a fantastic stay at Lantern House, wish we could stay longer. Thank you for the Christmas Trimmings!"*

*"Beautiful house in a lovely location. Thanks for all the guidance with things to do around the area. Loved Lacock. Would definitely come again."*

*"Beautiful village and lovely house/home, which was really well equipped for our 3 little ones. Thank you!"*



### **Flexible booking arrangements**

Weekly breaks usually start on Friday, 2 and 3 nights breaks usually start on Friday, and 4 nights break usually start on Monday. To enquire about booking or special offers, please email [lanternhouse@cotswolds.plus.com](mailto:lanternhouse@cotswolds.plus.com) or call tel +44 (0)1666 505807 / mob +44 (0)7928 809624.

### **Inclusive rental prices**

Weekly and flexible short break holiday rental (2, 3 or 4 nights) bookings are welcomed. Weekly, 2 and 3 night breaks usually start on Friday and 4 night breaks usually start on Monday.

Please view the availability calendar on the website <http://www.cotswolds.plus.com/booking.html> which shows inclusive normal weekly rates (starting at £475 for low season) for staying at Lantern House that cover: Wi-Fi broadband, electricity/ central heating, complimentary bucket of logs for the wood burner, high chairs, cot beds, bed linen and towels.

Flexible short break bookings are welcomed throughout the year, however, stays during peak holiday period may normally only be booked within 28 days of stay. Short break rates for 2, 3 or 4 night breaks are:

#### **2 nights (Friday to Sunday)**

Arrival on Friday: 60% of the inclusive normal weekly rates, e.g. 12 to 14 January 2018 would be £285 (0.60 X £475) - rounded to the nearest whole pound

#### **3 nights (Friday to Monday)**

Arrival on Friday: 75% of the inclusive normal weekly rates e.g. 12 to 15 January 2018 would be £356 (0.75 X £475) - rounded to the nearest whole pound

#### **3 or 4 nights (Monday to Friday)**

Arrival on Monday: 75% of the inclusive normal weekly rates e.g. 15 to 18 or 19 January 2018 would be £356 (0.75 X £475) - rounded to the nearest whole pound

Arrival details are emailed following full payment which include details of flexible access arrangements to cover for late night arrivals or uncertainty as to your arrival time at the cottage.



# **Lantern House**

## **Holiday Cottage in the Cotswolds, England UK**

**Lantern House, 3 High St, Sherston, Wiltshire, SN16 0LH**

**tel +44 (0)1666 505807 mob +44 (0)7928 809624 email [lanternhouse@cotswolds.plus.com](mailto:lanternhouse@cotswolds.plus.com)**



### **Booking conditions**

This contract is between Lantern House Holidays and the person responsible for making the booking on behalf of their group i.e. the "lead hirer". The lead hirer must be 18 years of age or older and shall complete a Lantern House booking request form. The contract shall be subject to these booking terms and conditions:

1. Weekly holiday lettings are usually from 3pm Friday to 10am the following Friday. Short Breaks are usually from 3pm Friday (2 or 3 nights) to 10am day of departure, and 3pm Monday (4 nights) to 10am day of departure. Short breaks during peak periods may normally only be booked within 28 days of arrival.
2. The maximum number of adults and children occupying the property shall not exceed 5 unless otherwise agreed. In addition up to 2 infants/ babies (under 2 years) may also stay.
3. A non-refundable deposit of £50 is required to confirm the booking. The final rental balance must be paid 8 weeks before the holiday start date together with a £100 cleaning/ damage deposit, which will be held and refunded (or destroyed if paid by cheque) after your departure subject to no damage and the cottage being left in a good order and clean condition. Accidental minor breakages are not charged. For bookings made less than 8 weeks before the holiday start date, the full weekly rental amount must be paid in full together with the £100 cleaning/ damage deposit.
4. Non-payment of the balance of the total holiday cost by the due date shall be deemed to be cancellation of the booking by the lead hirer.
5. If paying by cheque please make payable to Mr M Evans quoting Lantern House and the booking period on the back of the cheque and post to: Lantern House Holidays, 12 Cotswold Close, Tetbury, Gloucestershire, GL8 8RD.
6. In the event of a cancellation by the lead hirer no refunds of money paid shall be given apart from the £100 cleaning/ damage deposit. It is suggested you consider taking out holiday insurance to cover the cost of cancellation.
7. No pets or animals of any type are permitted on the premises.
8. No smoking anywhere inside the cottage.
9. The lead hirer must allow Lantern House Holidays and/ or its agents to enter the property to inspect the state of it and if needed undertake any (internal and external) remedial repairs, on reasonable notice, except in emergency when immediate access must be granted. All damages and breakages are the legal responsibility of the lead hirer, and their cost shall be refundable. However, minor damages or breakages and reasonable wear and tear will not normally be charged.
10. The lead hirer is responsible for the property and expected to take all reasonable care of it. All equipment, utensils etc must be left clean and tidy and the property must be left clean and tidy at the end of the holiday period.
11. Baggage and personal belongings are at the users risk at all times.
12. All information is given in good faith and every endeavour is made to ensure it is correct. However, no responsibility can be accepted for any loss or damage resulting from such information.
13. If you have any complaints during your stay please let Lantern House Holidays know as soon as reasonably possible, and in any event before departure to allow remedial action to be taken where possible. No claims will be considered in respect of equipment or services that remain faulty beyond the control of Lantern House Holidays.
14. The lead hirer is responsible for any act, neglect or default on their group's part and no responsibility can be accepted for any loss, damage, expense, accident, injury or inconvenience to persons arising from the letting.
15. If, for any reason, the property becomes unavailable through events beyond the control of Lantern House Holidays (for example fire, theft, damage, delay of building works, drought, interruption of utility supplies or similar) then it may be necessary to cancel the booking anytime prior to arrival date. Furthermore Lantern House Holidays reserve the right to cancel the booking anytime up to 6 months of arrival date should it plan to stop operating. Should either of the aforementioned occur and no acceptable alternative rental dates can be booked, then all monies paid will be refundable in full, but the lead hirer will have no further claims against Lantern House Holidays.